



JSW THE JAPAN STEEL WORKS, LTD.

URL <http://www.jsw.co.jp/>

Division Gate City Ohsaki-West Tower, 11-1, Osaki 1-chome, Shinagawa-ku,
Head Quarter: Tokyo 141-0032, Japan
Phone: +81-3-5745-2081 Fax: +81-3-5745-2083~84
URL http://www.jsw.co.jp/inj_f/inj_index.htm

JSW Plastics Machinery Inc.

Head Office: 555 South Promenade Ave., Unit 104, Corona, California 92879, U.S.A.
Phone: +1-951-898-0934 Fax: +1-951-898-0944
Chicago Office: 540 Capital Drive, Suite 130, Lake Zurich, Illinois 60047, U.S.A.
Phone: +1-847-550-0704 Fax: +1-847-550-0725
Detroit Office: 24300 Catherine Industrial Drive, Suite 403, Novi, Michigan 48375, U.S.A.
Phone: +1-248-308-2822

The Japan Steel Works (Singapore) Pte. Ltd.

17 Gul Lane 629413 Singapore
Phone: +65-68614511 Fax: +65-68623166

PT. JSW Plastics Machinery Indonesia

Gajah Building Unit K, Jl.Dr.Saharjo No.111 Tebet, Jakarta
Selatan 12810, Indonesia
Phone: +62-21-8370-2536 Fax: +62-21-829-8264

JSW Plastics Machinery (Philippines) Inc.

Unit 802 Alabang Business Tower, 1216 Acacia Avenue, Madrigal
Business Park Alabang Muntinlupa City Metro Manila 1771, Philippines
Phone: +63-2-478-2533 Fax: +63-2-809-6221

JSW Plastics Machinery (M) SDN. BHD.

D6-5-G, (Ground Floor), Block D6, Pusat Perdagangan Dana 1,
Jalan Pju 1A/46, 47301, Petaling Jaya, Selangor Darul Ehsan, Malaysia
Phone: +60-3-78426076 Fax: +60-3-78426078

The Japan Steel Works (Thailand) Co., Ltd.

78/6 JST Building 4th Fl., Moo 7 King Kaew Road, Rachatewa,
Bangplee, Samutprakarn 10540 Thailand
Phone: +66-2-738-5272 Fax: +66-2-738-5277

JSW Plastics Machinery Vietnam Ltd.

Room103, Techno-Center Thang Long Industrial Park Dong Anh District,
Hanoi, Viet Nam
Phone: +84-24-3951-6383 Fax: +84-24-3951-6384

JSW Plastics Machinery (H.K.) Co., Ltd.

Room 907, Corporation Park, 11 On Lai Street, Shatin N.T., Hong Kong
Phone: +852-2648-0720 Fax: +852-2686-8204

JSW Injection Machine Maintenance (Shenzhen) Co., Ltd.

1F, YiBen Electronic & Business Industrial Park, No.1063 Chaguang
Road, Xili Town, Nanshan District, Shenzhen City, Guangdong Province,
518055, People's Republic of China
Phone: +86-755-8602-0930 Fax: +86-755-8602-0934

JSW Machinery Trading (Shanghai) Co., Ltd.

28A, Strength Plaza, No.600-4, Tianshan Road, Shanghai, 200051,
People's Republic of China
Phone: +86-21-5206-7031 Fax: +86-21-5206-7033

JSW Plastics Machinery (TAIWAN) Corp.

Head Office: 1F., No.21, Da Hu 1st Road, Guieshan Shiang Taoyuan Country 33373
Taiwan, R.O.C.
Phone: +886-3-396-2102 Fax: +886-3-396-2104
Tainan Office: 15F., -7, No.689-78, Xiaodong Road, Yongkang City, Tainan Country
71052 Taiwan, R.O.C.
Phone: +886-6-311-4192 Fax: +886-6-311-4193

Japan Steel Works India Private Limited

611, Time Tower, MG Road, Sector 28,
Gurgaon, Haryana, 122001, India
Phone: +91-124-469-4444, Fax: +91-124-469-4433

JADS SERIES

All Electric Servo Drive
Injection Molding Machine



Model
J220ADS | J280ADS | J350ADS | J450ADS

JSW



JQA-QMA13993
JQA-EM6416

The results of four generations of accomplishments and new technologies-J-ADS

JADS SERIES
All Electric Servo Drive
Injection Molding Machine

Providing the maximum safety to all of our customers

AD Strong

Clamping Unit Lightweight high rigidity, low vibrations
Longer mold life
Reduced grease use for cleaner machine
Clamping force feedback
Reduction in mold maintenance costs

AD Stable

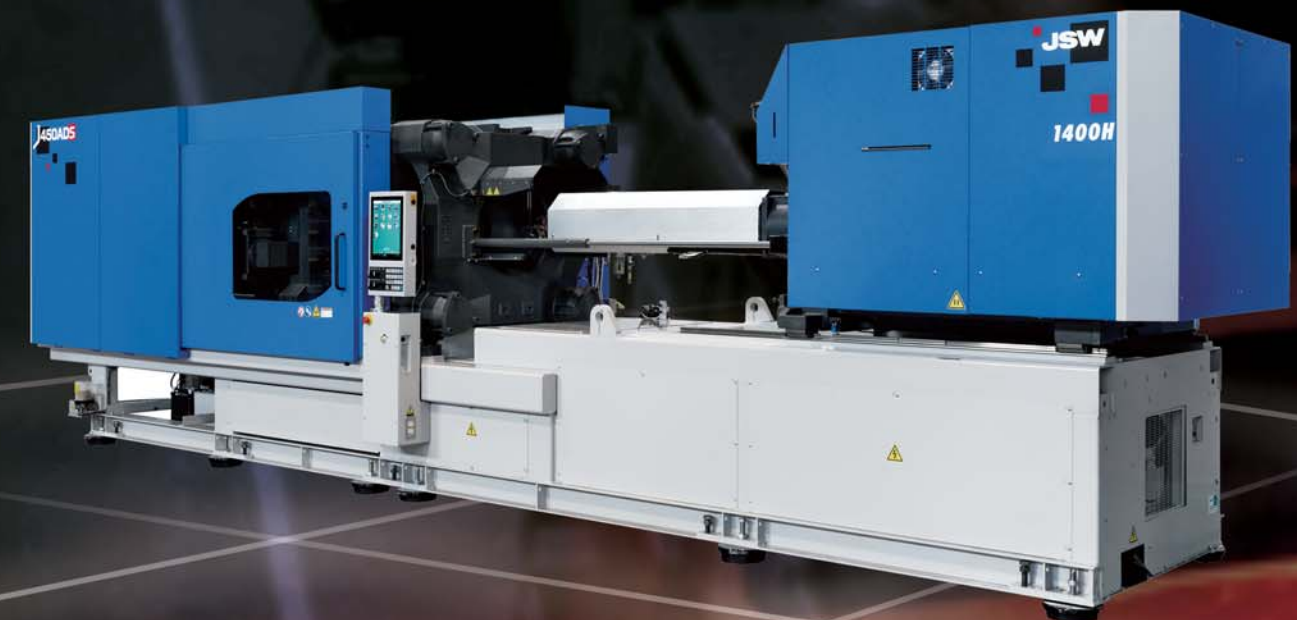
Injection Unit New designed energy saving barrel
New proposals for screw technologies
Stabilization of molded parts
JSW original recovery functions
Wide selection of injection unit to customer needs

AD Smart

Controller Function enrichment with simple operation
Simple display of process parameters
Molding condition memo
I/O customized function

AD Support

Energy-saving/maintenance Energy-saving function
Power consumption monitor
Supporting reduction in power consumption
Both predictive and preventive maintenance



Complying with safety regulations Industrial
machinery
Industry safety rules (JIMS K1001)

—Premier quality in the industry

ADStrong

Clamping Device

Rigid clamping device manufactured utilizing JSW's expertise in materials technologies. Produced from raw materials, is effective in assuring stable production.

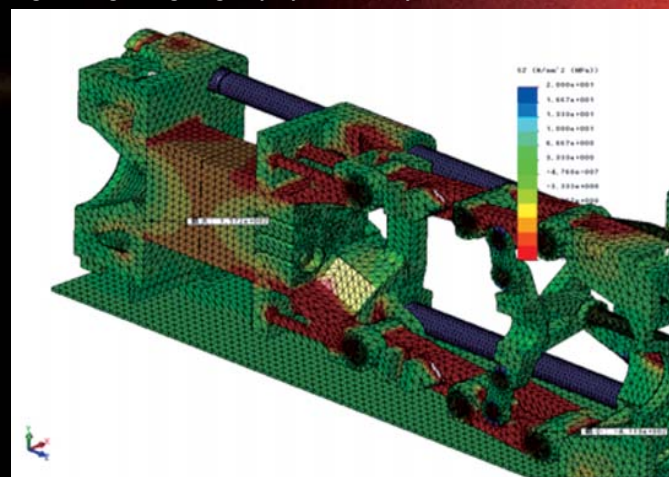
Clamping Device

- Lightweight high rigidity, low vibrations
- Longer mold life
- Reduced grease usage for cleaner operation
- Promoting proprietary manufacturing
- Flat press platen Chapter 2

Bushingless movable platen by adoption of linear guides



Light-weight/high rigidity by FEM analysis



Friendly to Molds

- Clamping force monitoring
- Clamping force feedback
- Reduction of mold maintenance costs
- Monitoring both mold open and close, and ejection process

Mold Protection

- Simple auto setting
- Adjusts with mold temperature variations
- Molding-open monitoring, ejector monitoring



Mountable for Large-sized Mold

	J220ADS	J280ADS	J350ADS	J450ADS
Mold Height Min. - Max.	230~680	250~720	300~770	350~900
Tie Bar Distance (H x V)	650×590	730×630	810×730	900×810

(Unit: mm)

—JSW proprietary development

ADStable

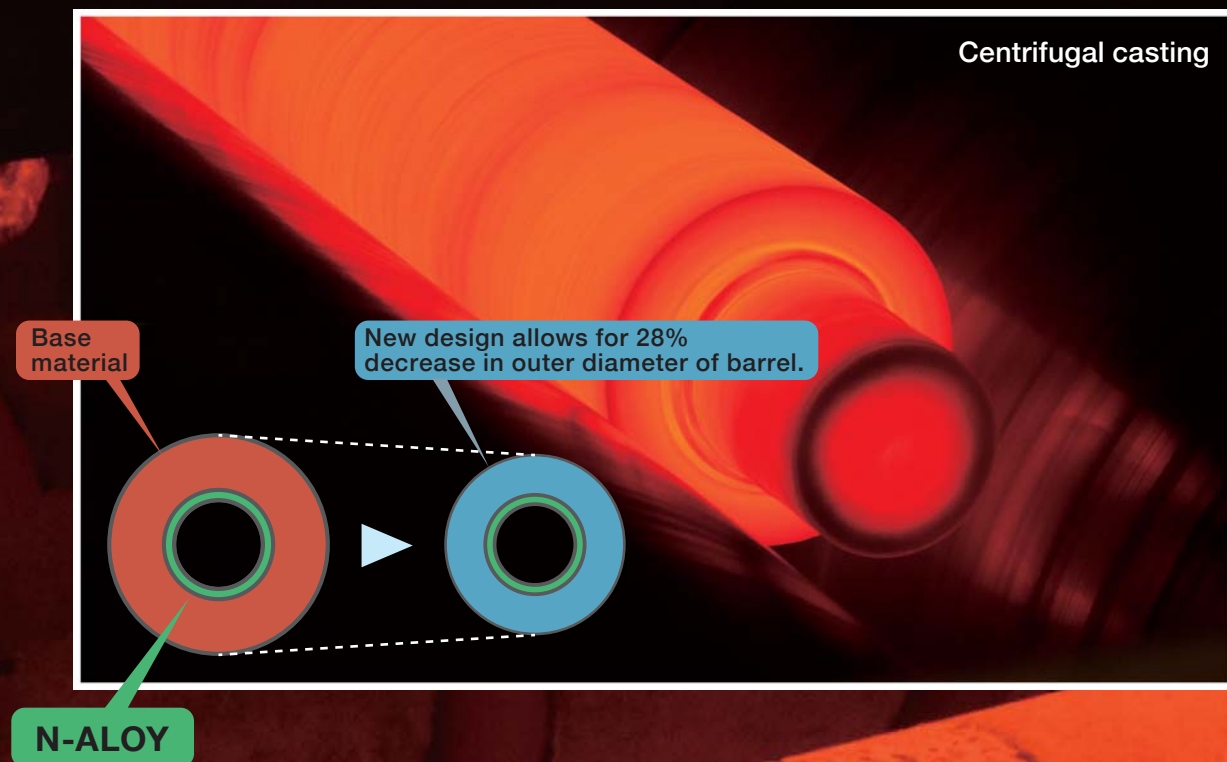
Injection Unit

JADS SERIES
All Electric Servo Drive
Injection Molding Machine

The high precision measuring control and the screw variation response to every molding

New designed energy saving barrel

Reduced running cost, Shorter heat-up time



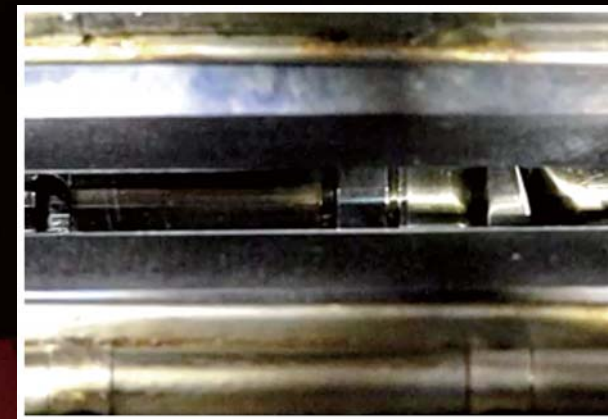
New proposal for the screw technologies

- Design • Manufacturing
- Materials • Research and development (R&D)

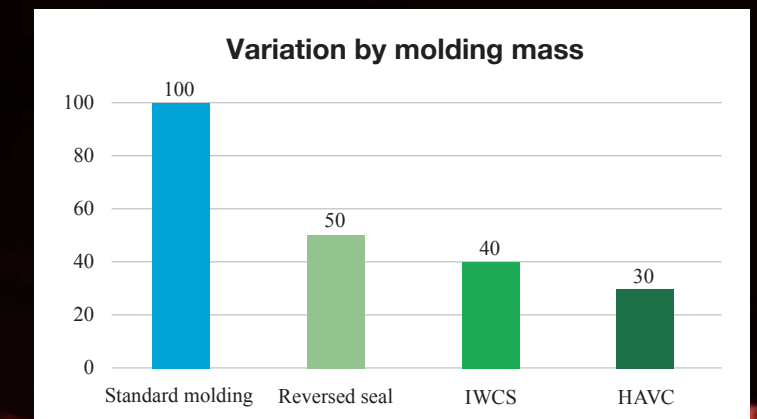


Stabilization of molding component Original measuring technology

Actual cut away view of barrel



Recovery stabilization control
(HAVC > IWCS > Reverse seal)



Wide module selection in response to the needs

	Injection unit	Screw diameter (mm)	Injection pressure (MPa)	Standard unit Max. injection speed (mm/s)	High speed unit Max. injection speed (mm/s)	Extended hold time Max. injection speed (mm/s)
J220ADS	300H	40 46 51	250 189 154	240	330	160
J280ADS	460H	46 53 58	234 177 147	160	300	160
J350ADS	890H	58 66 72	229 177 149	160	270	120
J450ADS	1400H	66 76 84	241 182 149	160	300	160
	2300H	84 92	190 158	160		160

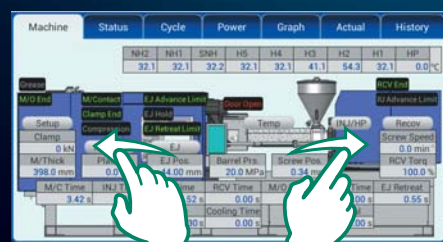
— Improvement for operability/ visibility

ADSmart Controller

Function enrichment by a simple operation

Main characteristics of SYSCOM5000i

- Large 15" display utilizing energy savings LED technology
- Improvement for visibility by expanding the setting screen
- Agile multi-touch operation
- Simple operation lever switch
- On screen instruction manual



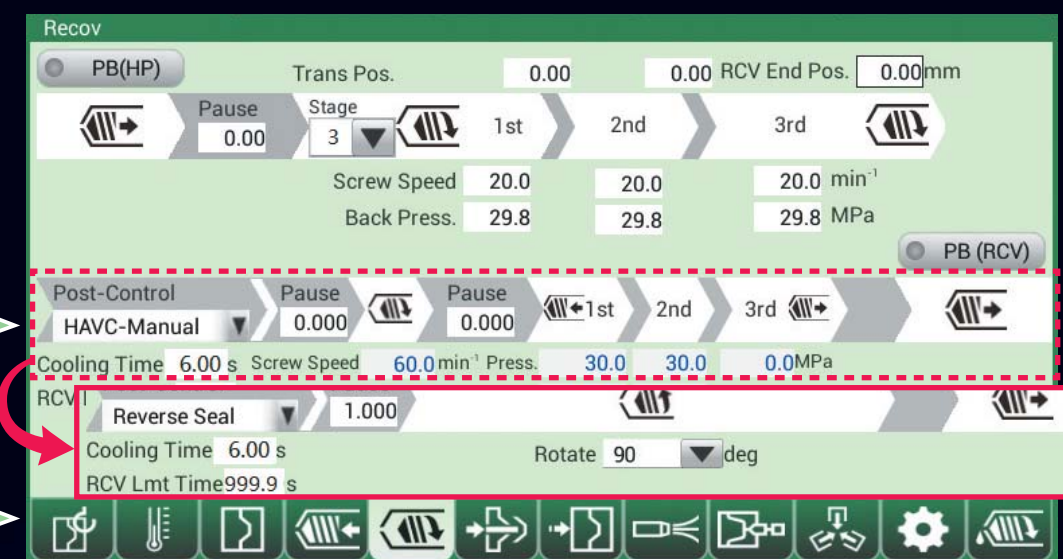
Enriched advanced function-mounted new controller SYSCOM 5000i

Easy to understand operation process display

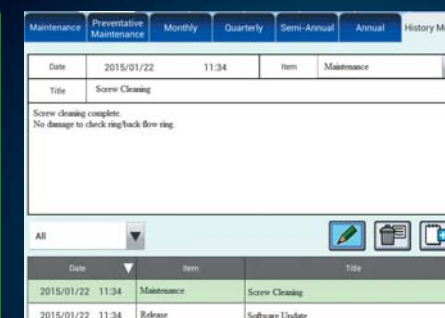
Screen layout shows process sequence in each operation on mode.

Display switching according to the operation mode

The move is to be easy to understand utilizing pictograms



With further convenient functions



Molding condition memo

Together with the molding conditions, the caution memo in molding and setting of the peripheral systems, and the image of molding components are able to be saved.

Maintenance memo

The history of the molding machine maintenance is able to record on the controller. The periodical inspection items and the execution history can be checked on the controller.

I/O customized function

I/O signals can be designed on screen.



- (1) Mold opening completed
- (2) Take-out instruction to the ejector
- (3) Take-out from the ejector, and receives the completed pulse signal
- (4) Clamping start 3-sec. operation of the belt conveyor

Energy-saving/maintenance

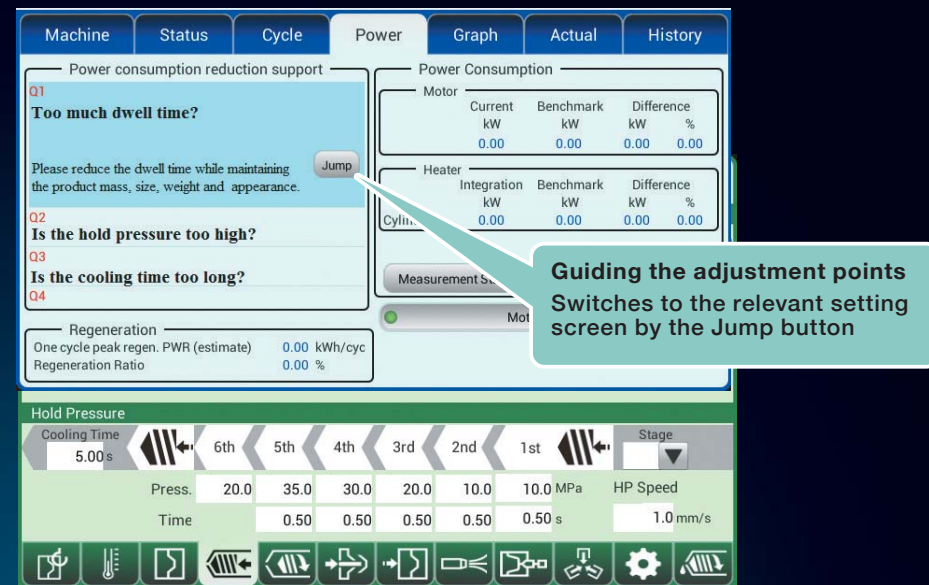
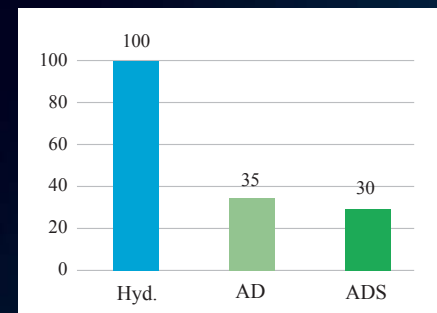
Energy-saving performance

Reduction support for power consumption

Assistance for molding condition change to reduce power consumption

Comparison of the power consumption amount

※Hydraulic machine: 100 standards



Support for maintenance

Periodical inspection

The periodical inspection items and the execution history can be checked on the controller.

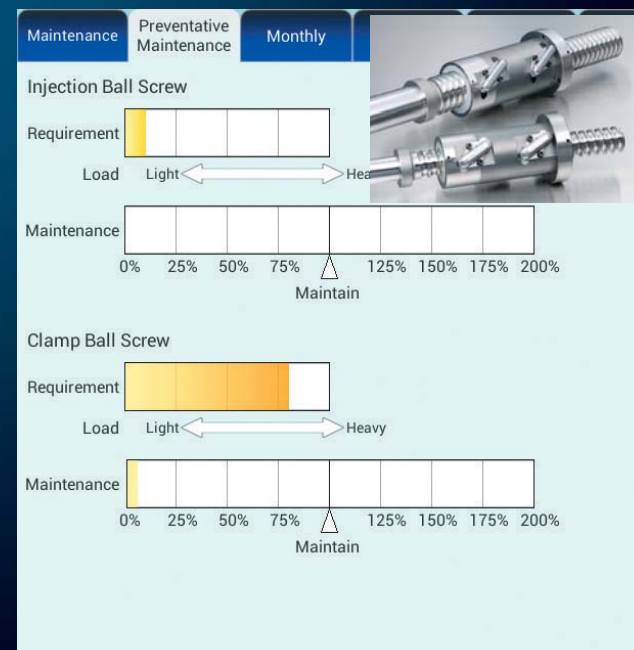
Quarterly To three pasts			
No.	Point	Date confirmed	
Q-1	Ball screws	2014/12/15	
Q-2	Automatic grease lubrication apparatus	2014/12/15	
Q-3	Motor cooling fan	2014/12/15	
Q-4	Control panel cooling fan	2014/12/15	
Q-5	Mold thickness adjusting device		
Q-6	Heater band mounting bolts		
Q-7	Thermocouples		
Q-8	Grease hose, lines		
Q-9	Linear guides		
Q-10	Hydraulic pressure hose		
Q-11	Hydraulic cylinder		

No.	Point	Check item	Check
Q-1	Ball screws	Grease lubrication state Dirt damage	<input type="checkbox"/> History
Q-2	Automatic grease lubrication apparatus	Operation verification	<input type="checkbox"/> History
Q-3	Motor cooling fan	Cleaning	<input type="checkbox"/> History
Q-4	Control panel cooling fan	Cleaning	<input type="checkbox"/> History
Q-5	Mold thickness adjusting device	Mold thickness increase and decrease implementation	<input type="checkbox"/> History
Q-6	Heater band mounting bolts	Loose	<input type="checkbox"/> History
Q-7	Thermocouples	Inserted state	<input type="checkbox"/> History
Q-8	Grease hose, lines	Pipe deterioration, Damage Grease leakage	<input type="checkbox"/> History
Q-9	Linear guides	Grease lubrication state Dirt, damage	<input type="checkbox"/> History
Q-10	Hydraulic pressure hose	Pipe deterioration, Damage Oil leak	<input type="checkbox"/> History
Q-11	Hydraulic cylinder	Oil leak	<input type="checkbox"/> History

Operating Time: 2 days
Collective History

Prediction maintenance

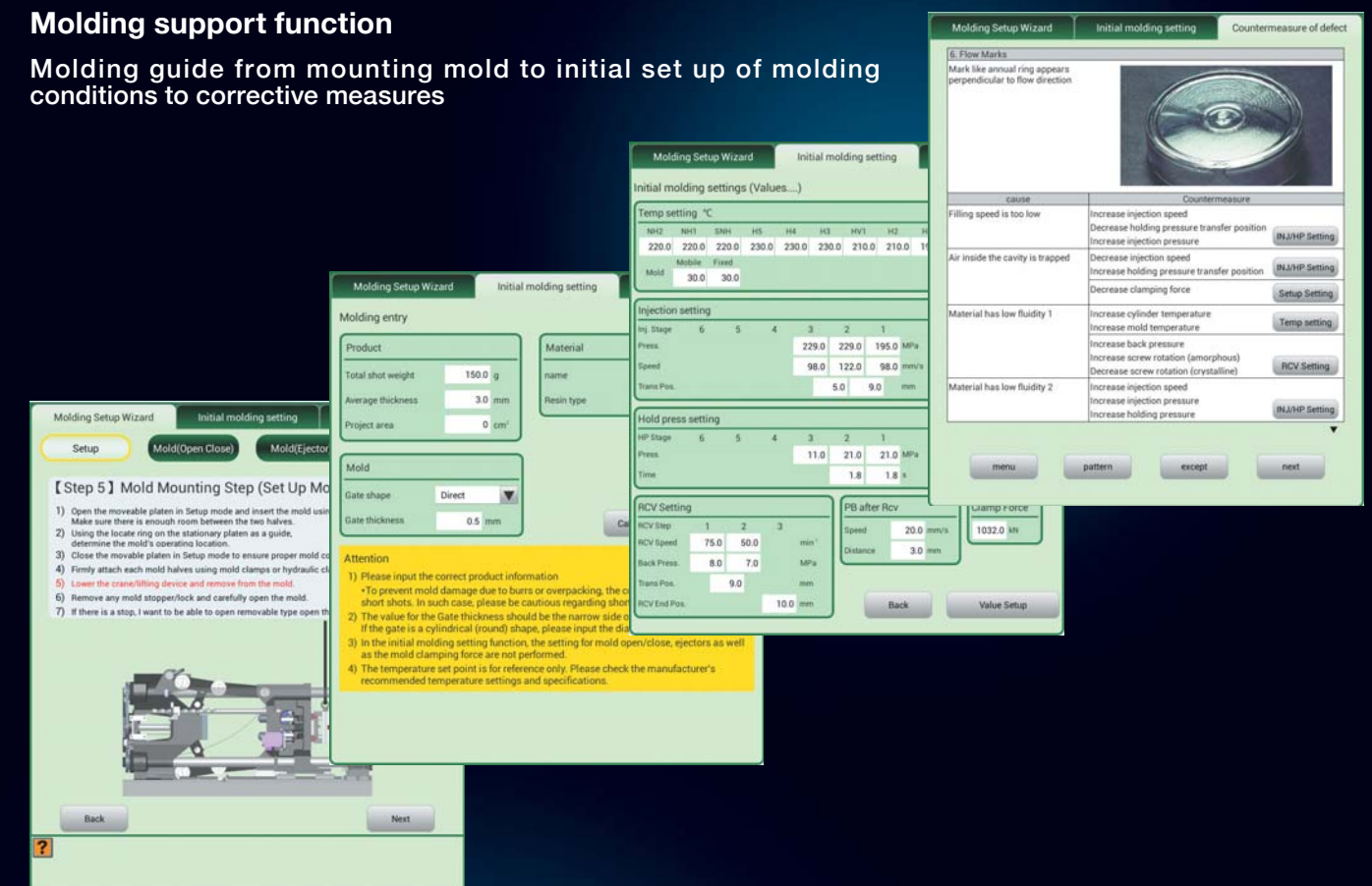
Condition monitor of ball screws based on the operating load.



Molding support

Molding support function

Molding guide from mounting mold to initial set up of molding conditions to corrective measures



Enriched Hiroshima injection R&D center

Injection school

In preparation for a training lecture by JSW experienced staff.
Multiple levels of training are available.



Hiroshima injection R&D center

Injection R&D center has newest machines to support customer's trial test of molds, material, molding process and etc.

